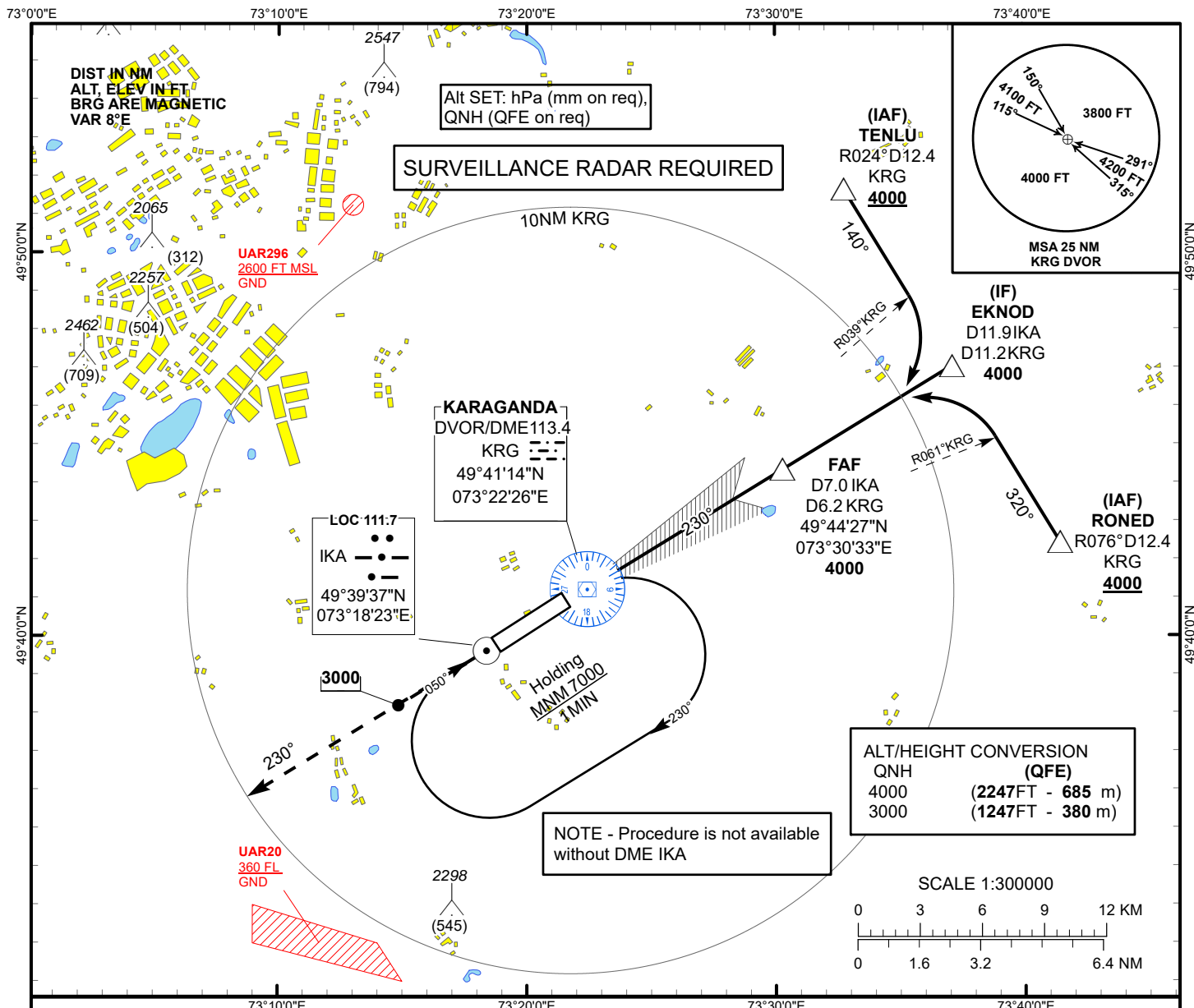


INSTRUMENT APPROACH
CHART
ICAO

AERODROME ELEV 1766 FT
HEIGHTS RELATED TO
THR RWY 23 - ELEV 1753 FT

KARAGANDA TOWER 122.0
KARAGANDA ATIS (EN) 135.8
KARAGANDA ATIS (RU) 127.8

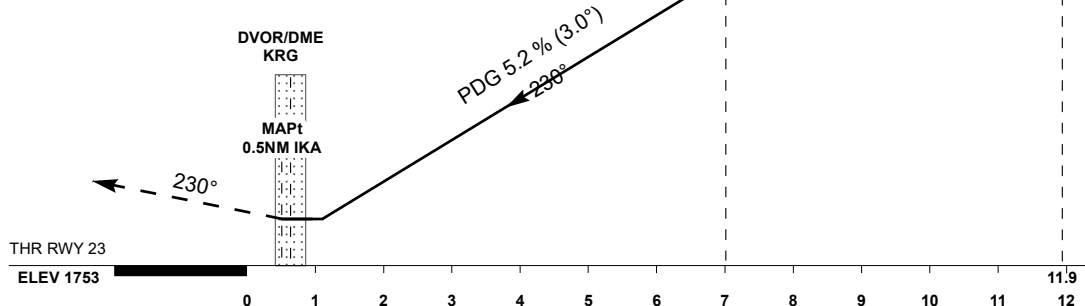
KARAGANDA
LOC/DME
RWY 23



MISSED APPROACH

Climb on track 230° to 4000 ft.
After passing 3000 ft radar
vectoring will be provided.

TRANSITION ALT
10000



Aircraft Category		A	B	C	D	DIST to THR DME IKA	NM	7	6	5	4	3	2	1
Straight-in Approach OCA/H						DME KRG	NM	6.2	5.2	4.2	3.2	2.2	1.2	0.2
						ALTITUDE	FT	4000	3713	3394	3076	2757	2439	2121
	LLZ (GP INOP)					HEIGHT	FT	(2247)	(1960)	(1641)	(1323)	(1004)	(686)	(368)
DME IKA ZERO RANGED TO THR RWY 23														
Aerodrome Operating Minima MDH ft x RVR(CMV)	LLZ (GP INOP)					GS	Kt	80	100	120	140	160	180	
						Desc.Rate(5.2%)	ft/min	420	530	630	740	840	950	
						FAF-MAP(6.5NM)	min:sec	4:52	3:54	3:15	2:47	2:27	2:10	

KARAGANDA
LOC/DME

AERONAUTICAL DATA TABULATION

LOC/DME approach to RWY23 from TENLU, EKNOD, RONE	
Fix/point	Coordinates
(FAF) D7.0 IKA, D6.2 KRG	49°44'27.1"N 073°30'32.8"E
EKNOD (IF) D11.9 IKA, D11.2 KRG	49°47'02.9"N 073°37'07.1"E
TENLU (IAF) R024° D12.4 KRG	49°51'39.2"N 073°32'46.3"E
RONE (IAF) R076° D12.4 KRG	49°42'26.4"N 073°41'27.1"E
THR RWY23	49°40'49.44"N 073°21'24.50"E
LOC IKA	49°39'37.0"N 073°18'23.0"E
DVOR/DME KRG	49°41'13.9"N 073°22'25.7"E
Final approach descent angle is 3°	